

# KEY

## Our workforce

▶ Number of workers  
2023

174,499



4%

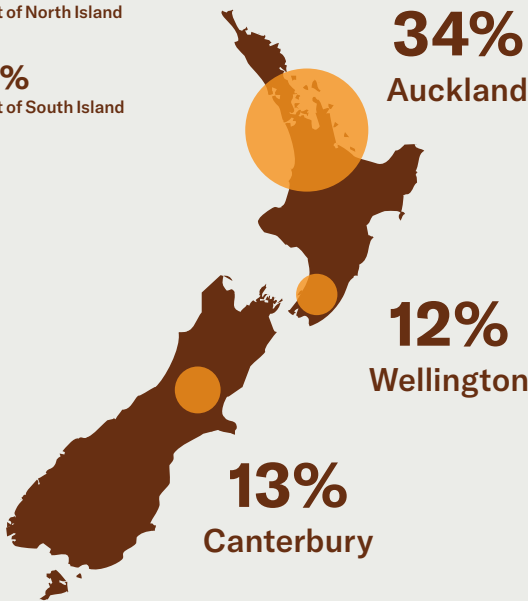
↑ Change over past  
5 years (2018-2023)

11%

↑ Forecast change  
over next 5 years

▶ Employment by Region  
2023

28%  
Rest of North Island  
14%  
Rest of South Island



▶ Age 15 - 24 years  
2018

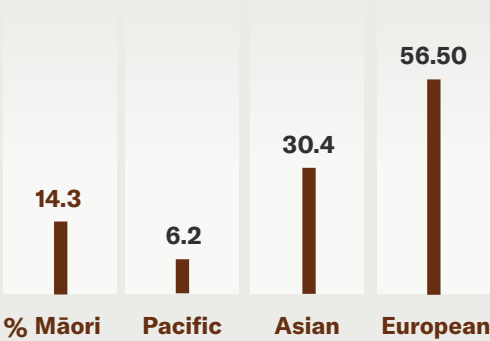
36%

▶ Female  
2023

61%



▶ Ethnicity  
2018



# INFORMATION

## Our businesses

▶ Number of business  
2023

25,881

0.3%

↑ Change in Business  
over last year (2022-2023)

▶ Māori owner business  
2021



7%



▶ Self-employment  
2023

20,436

▶ Business size FTE per business  
2023

7

## Our economy

▶ GDP  
2023

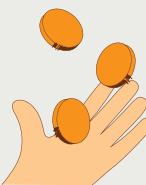
\$7.9bn

▶ GDP per FTE  
2023

\$56,571

▶ Change in GDP over last year (2022-2023)  
2023

11% ↑



## Occupation

	2023	2018	2027	Actual change over past 5 years 2018-2023	Forecast change over next 4 years 2023-2027
Chef	22,840	20,636	25,585	11%	12%
Waiter	15,899	15,574	16,760	2%	5%
Cafe or Restaurant Manager	14,092	13,095	15,337	8%	9%
Sales Assistant (General)	13,157	12,046	13,970	9%	6%
Kitchenhand	11,534	10,983	12,339	5%	7%

Training & Qualification



Current NZQCF Products								
	Qualifications	Programmes	Enrolments 2023	Enrolment 2023 vs 2017	Enrolment 2023 vs 2022	Completion 2022	Completion 2022 vs 2017	Completion 2022 vs 2021
Accommodation	2	7	55	-87%	38%	20	-85%	-50%
Level 3			55			20		
Beverage and Quick Service Restaurants	4	60	6790	-4%	-10%	2985	-10%	23%
Level 3			5675			2495		
Level 4			1100			485		
Level 5			15			5		
Catering	2	2	230	-47%	-33%	125	92%	0%
Level 3			170			110		
Level 4			60			15		
Cookery	3	89	2345	-39%	-4%	825	-63%	-48%
Level 3			805			230		
Level 4			1290			410		
Level 5			250			185		
Hospitality	5	70	850	-62%	-17%	500	-52%	-57%
Level 2			630			280		
Level 3			15			20		
Level 5			200			125		
Level 6			5			75		